

Benefited by:

Ministerium für Kinder, Jugend, Familie,
Gleichstellung, Flücht und Integration
des Landes Nordrhein-Westfalen



Kommunales
INTEGRATIONS | NRW
Management

CONTACT AND OTHER INFORMATION:

Case Management Coordination

Sarah Schlippe
Tel.: 02351 966-6570
kim@maerkischer-kreis.de

Administration Coordination

Jan Kortz
Tel.: 02351 966-6202
kim@maerkischer-kreis.de

Publisher:

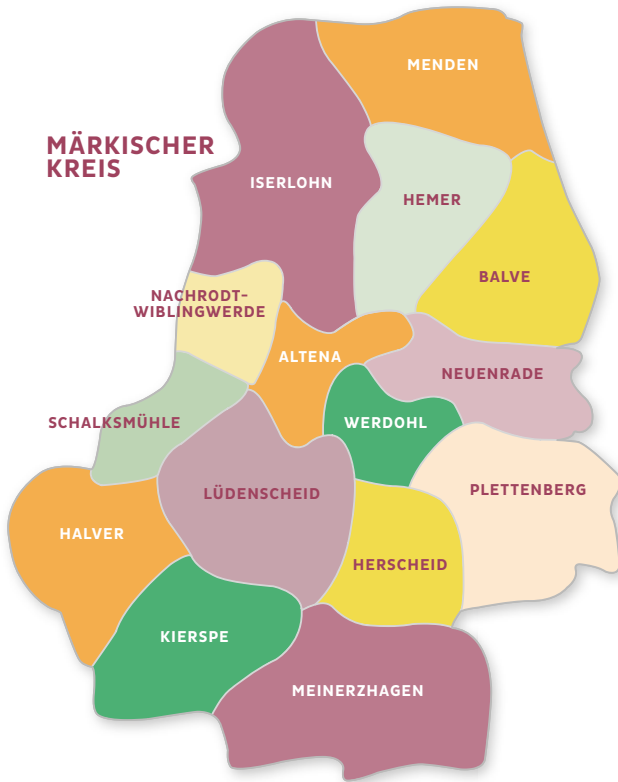
MÄRKISCHER KREIS
Der Landrat
Fachdienst Bildung und Integration
Heedfelder Str. 45
58509 Lüdenscheid
Tel.: 02351 966-60
Fax: 02351 6866
www.maerkischer-kreis.de

Photographs/illustrations:

3 x © istockphoto.com: FatCamera,
kate_sept2004, PeterPencil
Print: Printery MÄRKISCHER KREIS

ENGLISCH

MÄRKISCHER KREIS



APPOINTMENTS BY PRIOR ARRANGEMENT

- if needed another person may be brought in
to interpret -

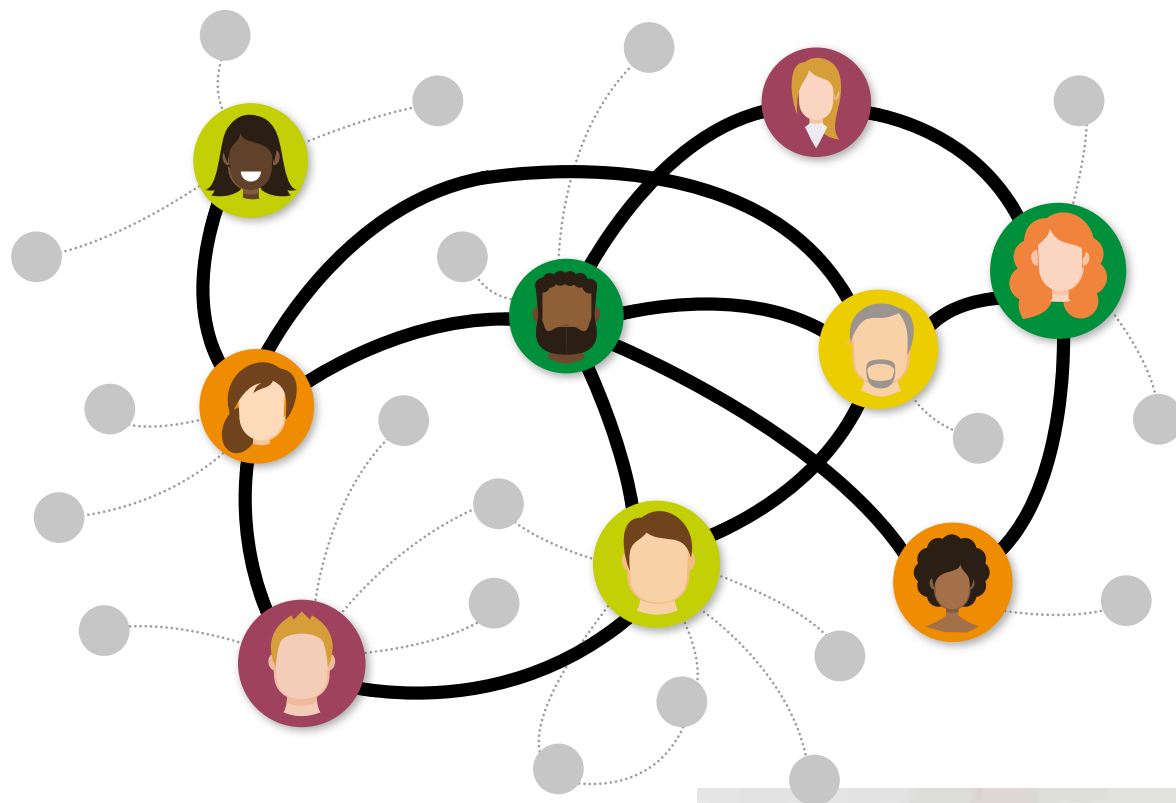


 MÄRKISCHER KREIS

CASE MANAGEMENT

Municipal Integration Management (MIM)

ENGLISCH



OUR TARGET AUDIENCE ...

We offer guidance and support as we accompany people with a history of migration on their way to integration.

Consultation topics include for example ...

- language
- school/university studies
- apprenticeship/occupation
- work/unemployment
- finances
- housing
- official appointments
- family
- health
- social participation
- leisure time
- residency
- naturalization



WHAT WE DO ...

We will consider your individual needs together and will provide you with a list of offers made to fit those needs so you may reach your integration goals step by step.

Especially when multiple challenges need to be addressed at the same time, we will be glad to provide help with finding the right places to go to and building a network that fits your needs.

We will support you until you reach your goals or until you can navigate the system of various offers and facilities independently.

OUR OFFERS ARE ...

... voluntary

Your participation is not mandatory.

... individually suited

Any offers of help will be adjusted to your personal life situation.

... suited to your needs and goal oriented

Together, we will develop ideas, goals and steps to take action.

... versatile

The provided help may be a combination of offers and benefits acquired through different facilities.

... long-term

We can support your integration process over a flexible period of time.

... confidential

We are subject to the duty of confidentiality.

... free of charge

There will be no costs for you.

